

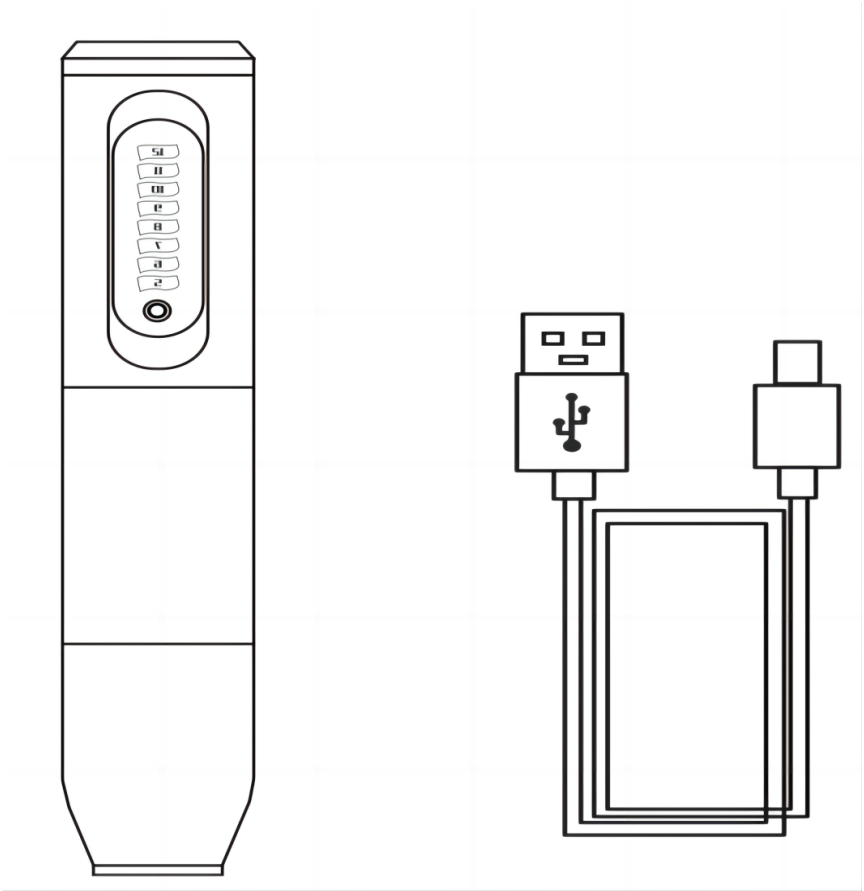


# NEEBOL

## INSTRUCTION

**OUR TATTOO MACHINE IS FIT  
FOR MOST CARTRIDGES NEEDLE**

# PRODUCT LIST



**Tattoo Pen**

**Cable**

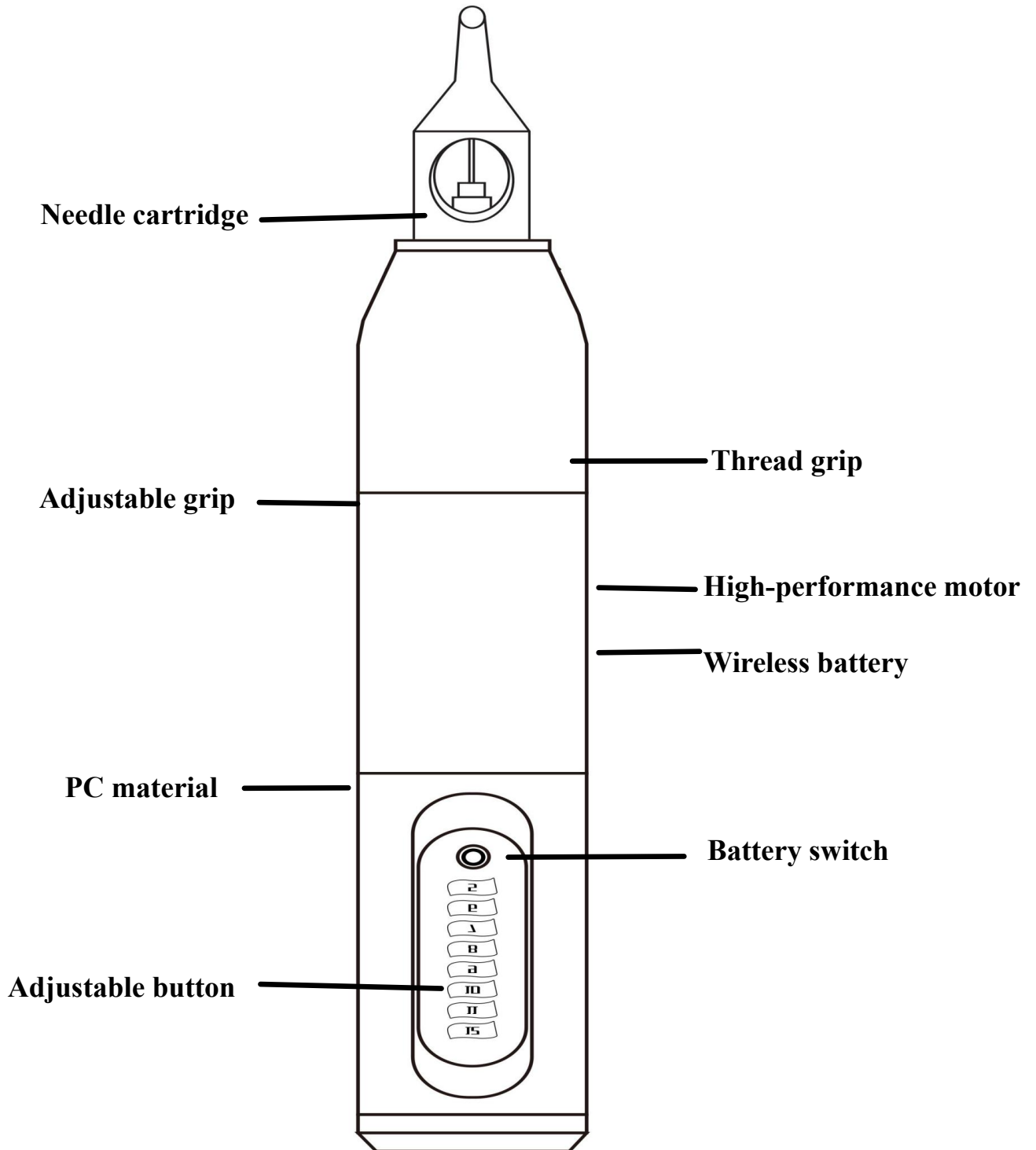
## LIST

- 1pc Wireless Tattoo Pen
- 1pc USB Cable
- 1pc Tattoo Pen Box

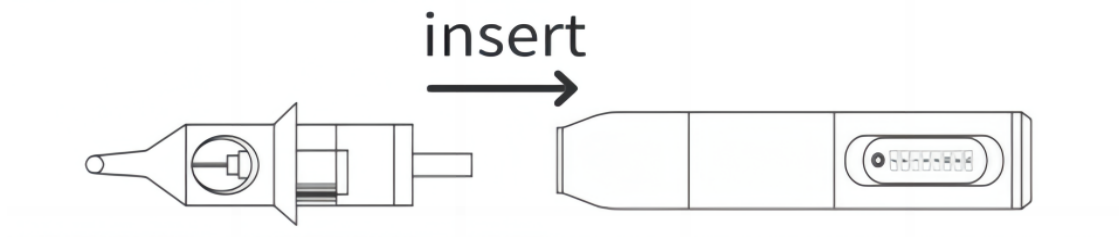
## PARAMETER

**Product brand: Neebol**  
**Length: 145mm&28mm**  
**Weight: 129.4g**  
**Stroke: 3.5mm**  
**Rotate speed: 7500**  
**Needle protrusion: 0-4mm**  
**Working voltage: 4-12V**  
**Start voltage: 4.0V**  
**Battery capacity: 1400mAh**  
**Material: PC engraving processing**

# PRODUCT ANALYSIS



## SETUP METHOD



### EASY to FIX ONLY 3 STEPS

#### **1** FIRST STEP

Put the needle cartridge into the pen

#### **2** SECOND STEP

Turn the needle cartridge to fix

#### **3** THIRD STEP

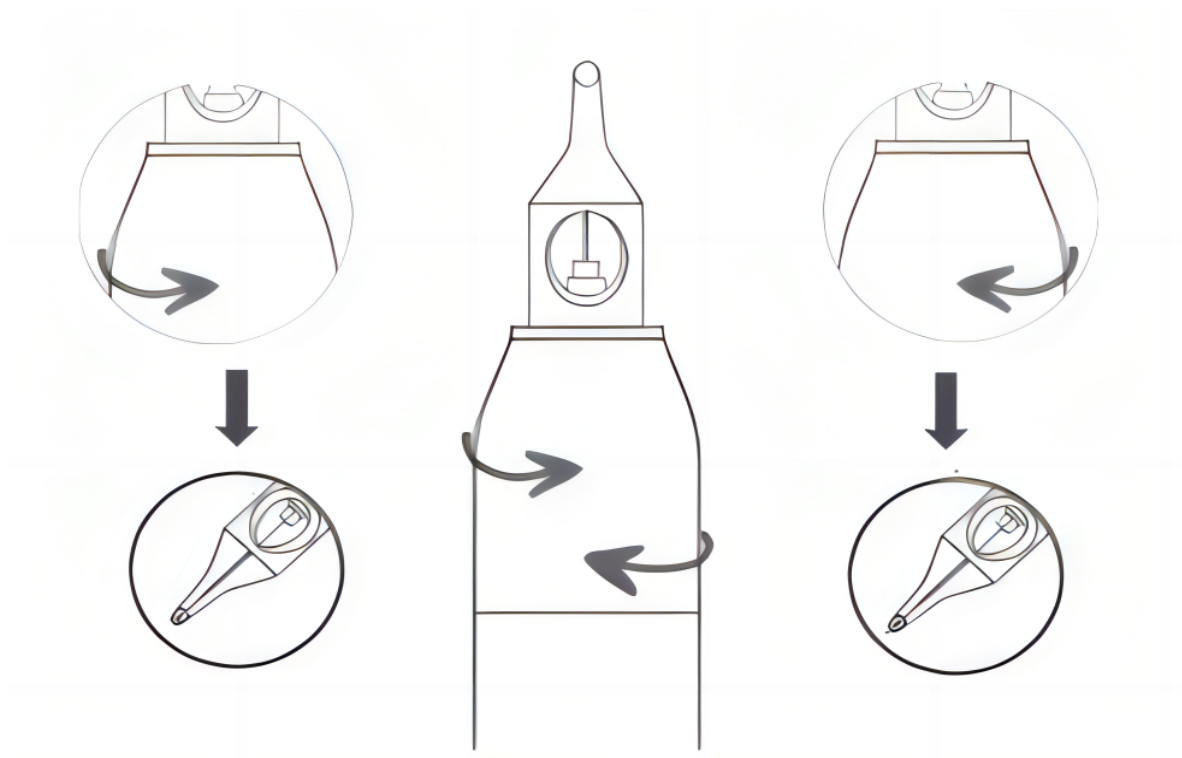
Long press the power on button to activate the tattoo pen

### EASY TO USE

Click the button to start/pause, and double-click the button to switch voltage

## NEEDLE ADJUSTED

The depth is between 0-4mm



Turn left/right to adjust the needle cartridge

# FAILURE ANALYSIS

## 1. There is no display on the power supply's screen:

A. Does the adapter work or no?

Solution: 1. Make sure that the adapter's input interface connect to Alternating current (ac)110V(220V).

2. Change the socket

B. Does the adapter or the cable damaged or not?      Solution: Check or change the adapter.

C. Whether the output plug of the adapter connected the power supply well?

Solution: Pull out the plug and plug into the power supply again.

D. Does the power supply's switch tumon or not?      Solution: Tumon the power

E. The power supply is damaged.      Solution: Send back to the factory to repair or resend.

## 2. The tattoo pen cannot work when the power supply works well (the light is on and the voltage is between 6-12V):

A. Does connect the line rightor not ( I is M1, II is M2 )? Or the output voltage is lower or not?

Solution: 1.Connect to the right line. 2. Adjust the output voltage(touch the button▲▼).

B. Does the foot pedal works well or have a damage?

Solution: 1. Repeatedly stepping on foot switch. 2. Repair or change the foot pedal.

C. Does the cable which connect to the tattoo pen and the power supply damage or not connect well?

Solution: Connect the cable again. 2. Change the cable.

D. The tattoo pen is damaged.      Solution: Repair or Change the tattoo pen with us.

## 3. The tattoo pen cannot work:

A. Does the power supply work well or not?

Solution: Change another tattoo pen/gun to test the power supply.

B. Does the voltage on the power supply's screen show lower or not ?

Solution: Adjust the voltage to 5-12V when works.

C. Does the cable which connect to the tattoo pen and the power supply damage or not connect well?

Solution: 1. Connect the cable again. 2. Change the cable.

D. The tattoo pen's motor is burned as the voltage is too high(above 12V).

Solution: Repair or change the tattoo pen with us.

## 4. The tattoo pen works but needles cannot move:

A. Doe the needle match with the tattoo pen or is the tattoo pen is damaged?

Solution: 1. Use the needle which matches with the pen. 2. Change the needle.

B. Eccentric gear or the piston rod is split as the voltage is too high(above 12V)

Solution: 1. Replace the eccentric gear or the piston rod. (Before replace, please confirm with us.)

2. Send back to us and repair.

## 5. The needle cannot be fixed:

A. Does the needle match with the tattoo pen?      Solution: Use the appropriate needle.

B. Is the part of the grip which fixes the needle damaged?

Solution: 1. Change the part. (Before change, please confirm with us.) 2. Change the grip.